

American Recovery & Reinvestment Act Economic Analysis



January 5, 2010

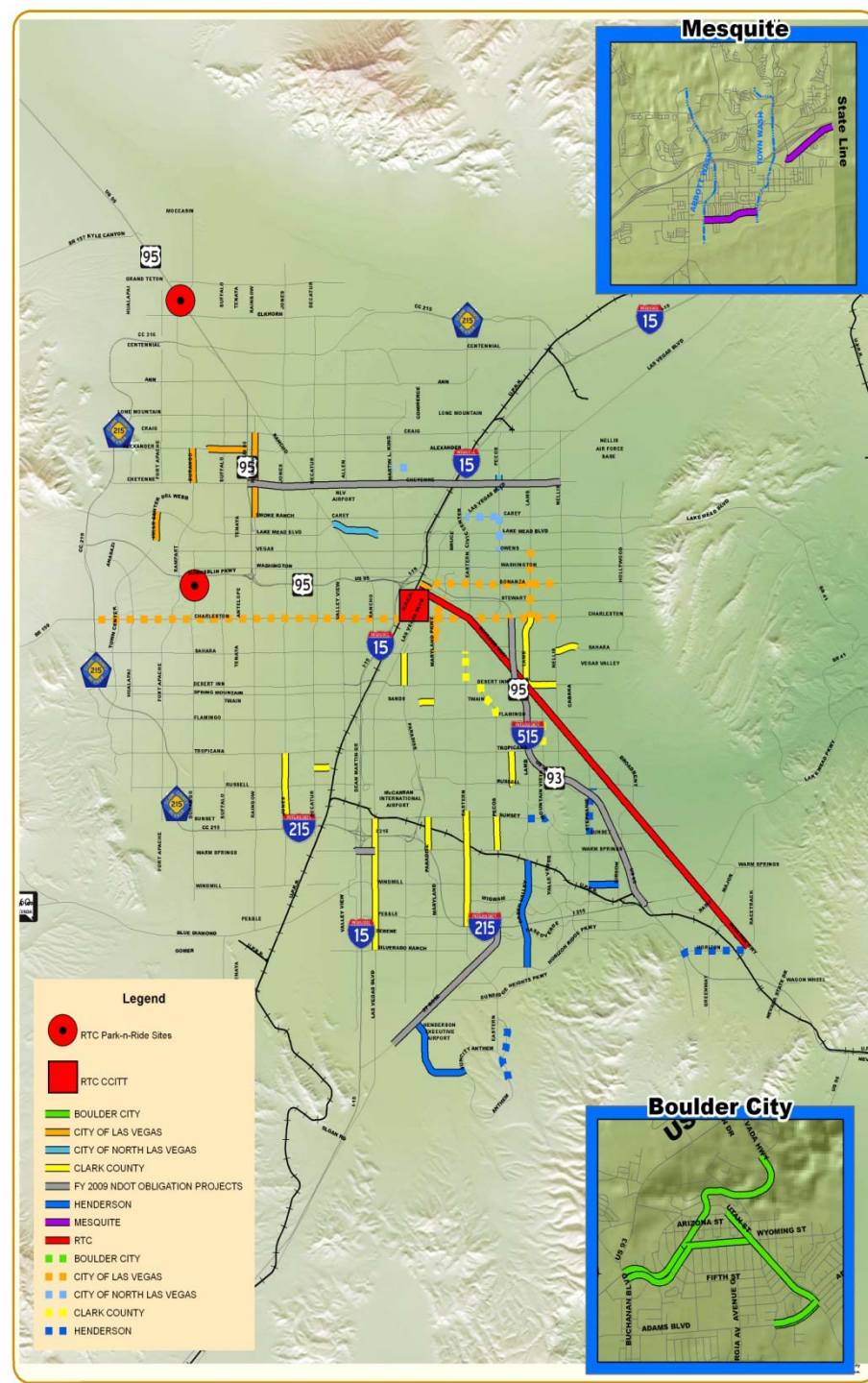
ARRA Stimulus Projects



- Nevada to receive \$270M in roadway & transit funding
 - \$39M to RTC for roadway projects
 - \$33.6M to RTC for transit projects
 - \$69M for NDOT projects in Southern Nevada

Roadway Stimulus Projects

- Clark County
- City of Las Vegas
- North Las Vegas
- Henderson
- Boulder City
- Mesquite



Transit Projects

1. New ACE line on Boulder Highway



2. New transit facility

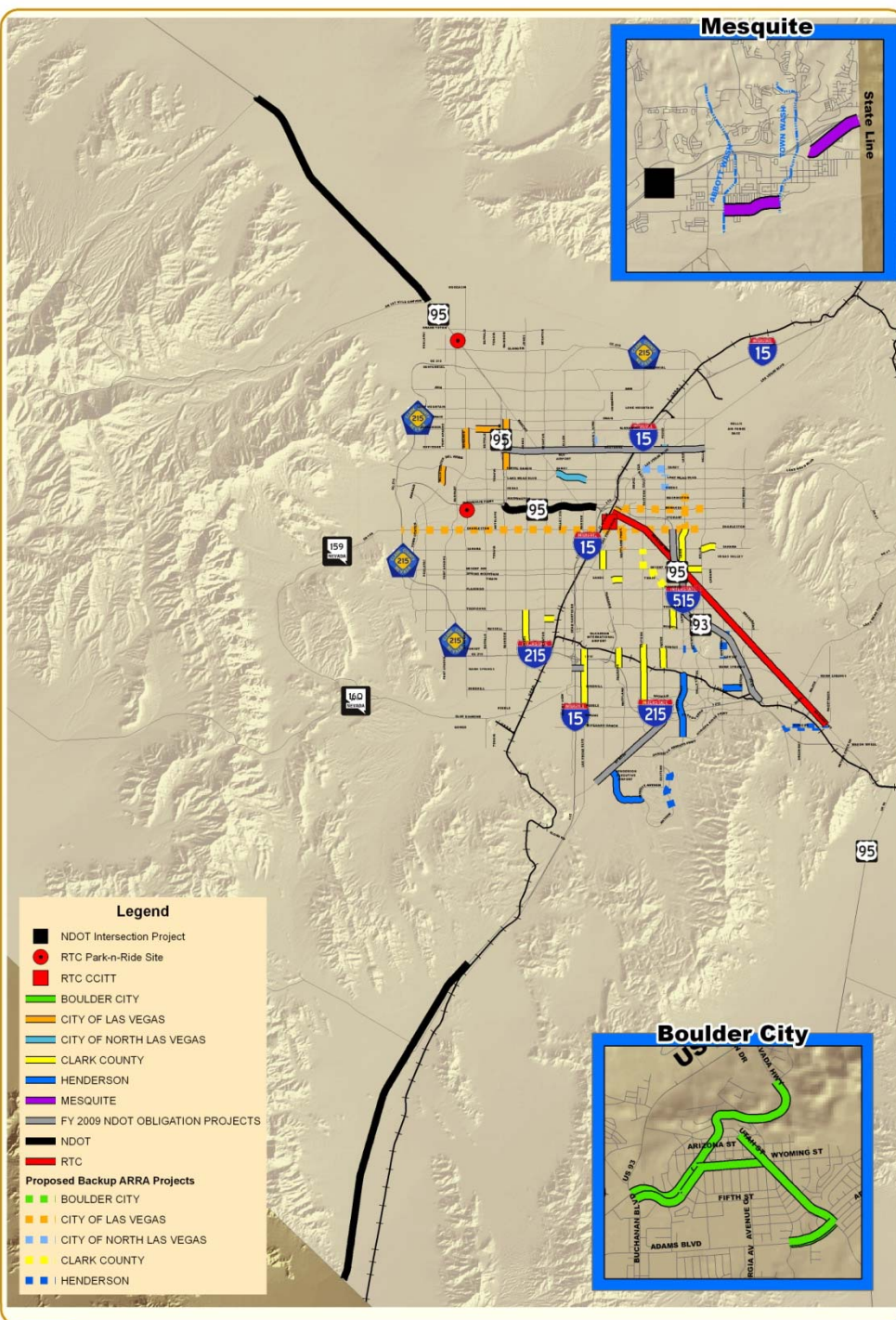


3. Park & ride lot



NDOT Projects

1. US 95 landscaping from MLK to Rainbow
2. I-15 East Mesa Interchange to S. Mesquite
3. US 95 from SR 157 to SR 156
4. I-15 Stateline



Types of Benefits

1. Direct



2. Indirect



3. Induced

Types of Economic Benefits



Direct benefits

- Purchase of construction materials
- Jobs created
- Payroll, etc.

Types of Economic Benefits



Indirect benefits

- Wholesale purchases of goods & services
 - Suppliers replenish inventory after selling materials to construction companies



Types of Economic Benefits



Induced benefits

- Employment & labor income growth generated by construction companies' employees
 - Rent /Home purchase
 - Dining out
 - Other personal income spent locally

Direct Project Benefits

- Estimated \$142.4M in direct benefits
 - Nearly 1,100 full-time equivalent construction jobs
 - Create approximately \$74.4M in direct labor earnings



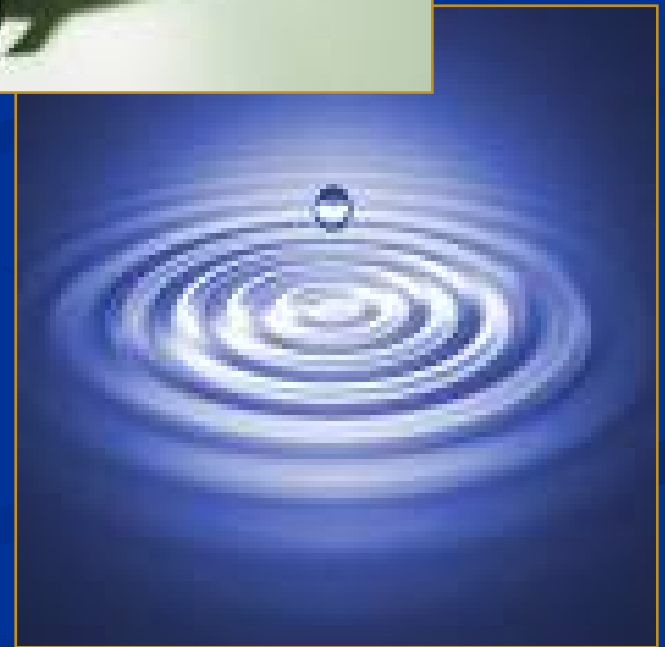
Indirect & Induced Benefits



- \$74.1M in indirect & induced benefits
- 600 indirect & induced full-time equivalent construction & non-construction jobs
- \$28.1M in indirect & induced wages / labor income

The Ripple Effect

- For every \$1 spent, another:
 - \$.52 in Output
 - .53 Jobs
 - \$.38 Wages



Retail Sales & Use Tax Benefits

- Direct tax benefits in Southern Nevada:
 - \$5.27M
- Personal spending tax benefits in Southern Nevada
 - \$908,000



Total Benefits



- \$216M in total output
- 1,677 full-time equivalent construction & non-construction jobs
- \$102.5M in direct, indirect & induced payroll during projects

American Recovery & Reinvestment Act Economic Analysis



January 5, 2010